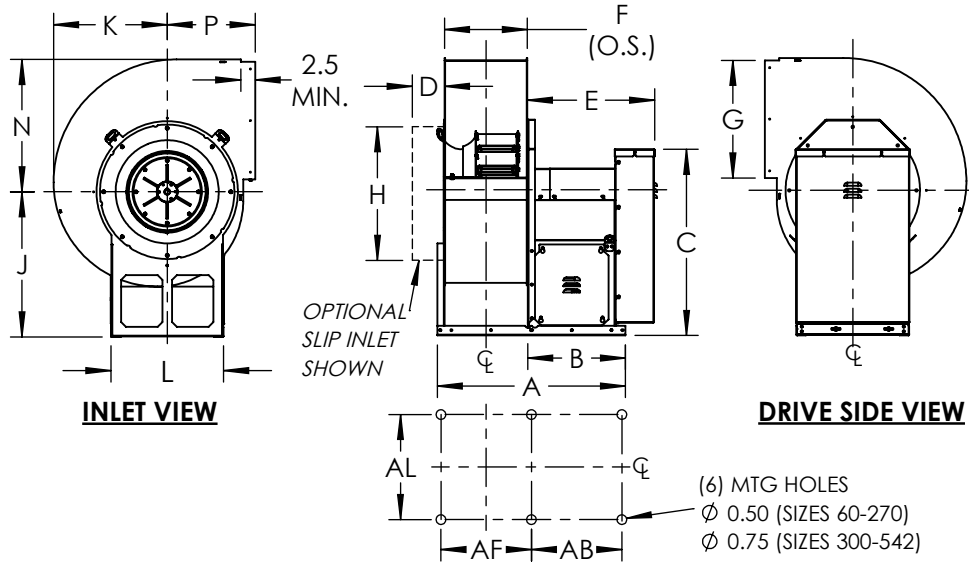




DATE: TAG:
 JOB:
 PROJECT:
 COMPANY:
 SALES PERSON:

UVS1 CLASS 0 ARRANGEMENT 10
 UTILITY VENT SET

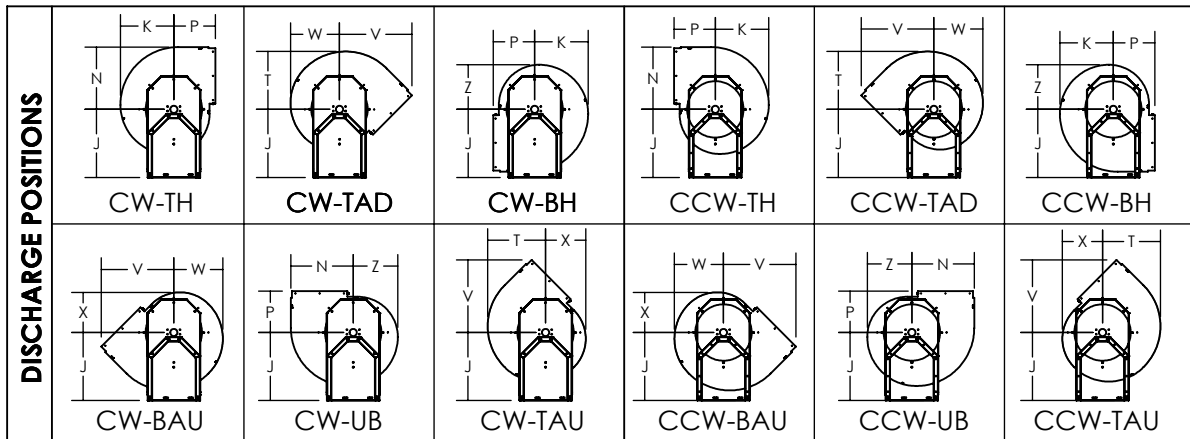


STANDARD CONSTRUCTION:

1. Welded Housing
2. Aluminum Wheel
3. Galvanized and Bolted Pedestal
4. Adjustable Motor Base Assembly
5. 100K L10 Life Bearings
6. 1045 TG&P Shaft
7. Slip Outlet
8. Open Inlet

OPTIONAL ACCESSORIES:

1. 200K L10 Life Bearings
2. Weather Cover (shown in illustration)
3. Slip and Flanged Inlet
4. Inlet/Outlet Companion Flange
5. Flanged Outlet
6. Vibration Isolators & Rails
7. Shaft Seal
8. Inlet Wire Guard & Outlet screen
9. Piezo Ring & Pressure Transducer
10. Disconnect Switch

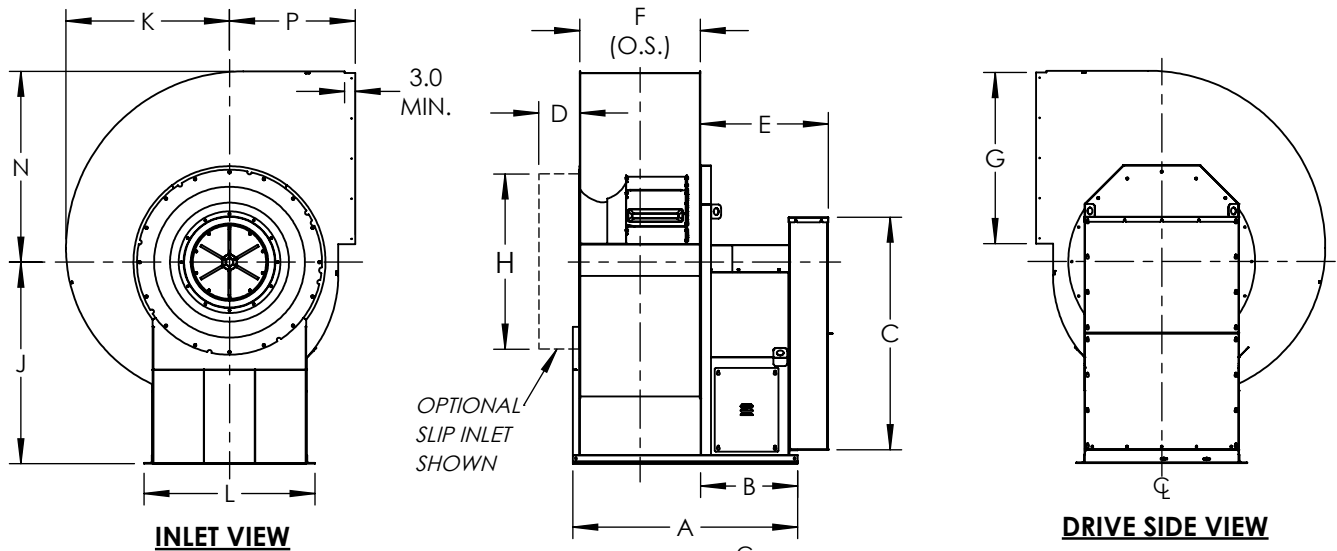


Size	A	B	C	D	E	F	G	H	J	K	L	N	P	Q	T	V	W	X	Z	AB	AF	AL	WT. (lbs)	MAX RPM	MAX MTR.
	60	24.00	15.38	25.06	3.19	19.25	7.06	10.00	14.13	18.13	9.94	15.69	11.56	11.75	5.00	10.75	16.13	9.19	7.75	8.38	13.88	8.63	13.69	83	2680
70	24.00	15.38	25.06	3.19	19.25	7.06	10.00	14.13	18.13	9.94	15.69	11.56	11.75	5.00	10.75	16.13	9.19	7.75	8.38	13.88	8.63	13.69	83	2680	56
80	24.00	15.38	25.06	3.19	19.25	7.06	10.00	14.13	18.13	9.94	15.69	11.56	11.75	5.00	10.75	16.13	9.19	7.75	8.38	13.88	8.63	13.69	83	2680	56
100	24.00	15.38	25.06	3.19	19.25	7.06	10.00	14.13	18.13	9.94	15.69	11.56	11.75	5.00	10.75	16.13	9.19	7.75	8.38	13.88	8.63	13.69	81	2680	56
122	25.56	15.38	25.06	3.19	19.19	8.63	12.25	16.39	18.13	12.06	15.69	14.06	13.19	5.00	13.06	18.88	11.13	9.13	10.13	13.88	10.19	15.69	98	2600	145T
135	26.44	15.38	25.06	3.19	19.25	9.50	13.50	17.63	18.13	13.25	19.19	15.44	13.94	5.00	14.31	20.44	12.19	10.00	11.13	13.88	11.06	17.19	107	2332	145T
150	29.50	17.38	26.69	3.19	22.25	10.56	15.00	19.13	19.75	14.69	19.19	17.06	14.38	4.50	15.88	21.88	13.50	11.06	12.25	15.88	12.13	17.19	128	2099	184T
165	30.56	17.38	28.31	3.19	22.25	11.63	16.50	21.19	21.38	16.13	19.19	18.75	14.31	3.50	17.44	23.00	14.75	12.13	13.44	15.89	13.19	17.19	142	2000	184T
182	31.81	17.38	30.19	3.19	22.25	12.88	18.25	22.89	23.25	17.75	19.19	20.69	14.44	2.50	19.25	24.44	16.31	13.38	14.81	15.89	14.44	17.19	158	1670	184T
200	33.06	17.38	32.12	3.69	22.25	14.13	20.00	24.63	25.25	19.44	20.44	22.63	15.50	2.50	21.00	26.63	17.81	14.63	16.19	15.89	15.69	18.44	190	1434	184T
222	37.63	20.38	36.25	3.69	26.50	15.69	22.25	27.44	27.75	21.56	22.69	25.13	16.94	2.50	23.31	29.38	19.75	16.19	18.00	18.89	17.25	20.69	234	1429	213T
245	39.19	20.38	38.75	3.69	26.50	17.25	24.50	29.44	30.25	23.69	23.44	27.56	18.31	2.50	25.63	32.13	21.69	17.79	19.75	18.89	18.81	21.44	272	1388	213T
270	44.00	23.38	41.50	3.69	29.50	19.06	27.00	31.94	33.00	26.00	24.94	30.38	19.88	2.50	28.19	35.19	23.88	19.55	21.69	21.89	20.63	22.94	330	1138	213T
300	48.38	25.13	46.19	3.69	31.25	21.19	30.00	35.88	36.88	28.88	27.25	33.69	21.75	2.50	31.25	38.81	26.50	21.67	24.06	23.38	23.50	24.69	410	1024	256T
330	52.81	27.50	51.06	3.69	36.13	23.25	33.00	38.88	40.13	31.69	30.25	37.00	23.63	2.50	34.31	42.50	29.06	23.78	26.44	25.75	25.75	27.69	495	903	286T
365	55.31	27.50	54.94	3.69	36.13	25.75	36.50	42.50	44.00	35.00	32.25	40.88	25.81	2.50	37.94	46.81	32.06	26.25	29.19	25.75	28.06	29.69	570	786	286T
402	57.94	27.50	59.06	4.19	36.13	28.38	40.25	46.25	48.13	38.56	36.25	45.00	28.19	2.50	41.75	51.38	35.31	28.90	32.13	25.75	30.75	33.69	675	683	286T

ALL DIMENSIONS ARE IN INCHES, WEIGHTS ARE APPROXIMATE AND DOES NOT INCLUDE DRIVES AND ACCESSORIES.

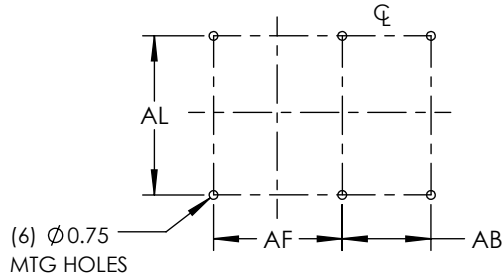
REVISION:	FORM:	REPLACES:
-----------	-------	-----------

**UVS1 CLASS 0 ARRANGEMENT 10
 UTILITY VENT SET 445-542**



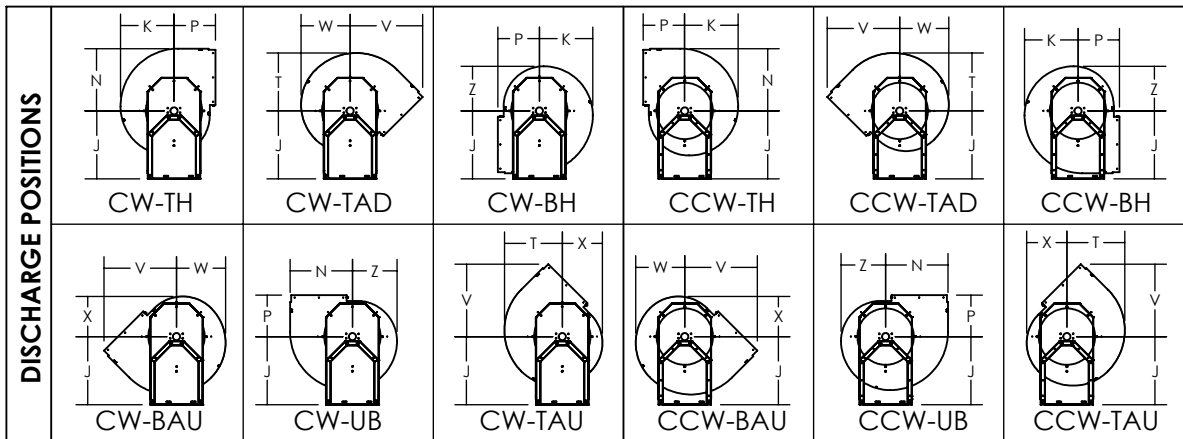
STANDARD CONSTRUCTION:

1. Welded Housing
2. Aluminum Wheel
3. Welded Pedestal
4. Adjustable Motor Base Assembly
5. 100K L10 Life Bearings
6. 1045 TG&P Shaft
7. Slip Outlet
8. Open Inlet



OPTIONAL ACCESSORIES :

1. 200K L10 Life Bearings
2. Weather Cover (shown in illustration)
3. Slip and Flanged Inlet
4. Inlet/Outlet Companion Flange
5. Flanged Outlet
6. Vibration Isolators & Rails
7. Shaft Seal
8. Inlet Wire Guard & Outlet screen
9. Piezo Ring & Pressure Transducer
10. Disconnect Switch



DIMENSIONAL DATA

Size	A	B	C	D	E	F	G	H	J	K	L	N	P	Q	T	V	W	X	Z	WT. (lbs)	MAX. RPM	MAX. MTR.
445	61.31	27.94	64.06	4.19	36.13	31.38	44.50	50.50	52.75	42.56	45.00	49.69	32.75	3.00	46.06	57.94	38.75	31.63	34.38	1000	600	286T
490	64.44	27.94	69.06	4.19	36.13	34.50	49.00	55.00	57.75	46.81	49.00	54.69	36.00	3.00	50.75	63.75	42.88	35.00	39.00	1200	517	286T
542	68.19	27.94	74.81	4.19	36.13	38.25	54.25	60.25	63.50	51.81	54.00	60.50	40.00	3.00	56.13	71.00	47.44	38.75	43.13	1400	418	286T

ALL DIMENSIONS ARE IN INCHES, WEIGHTS ARE APPROXIMATE AND DOES NOT INCLUDE DRIVES AND ACCESSORIES.